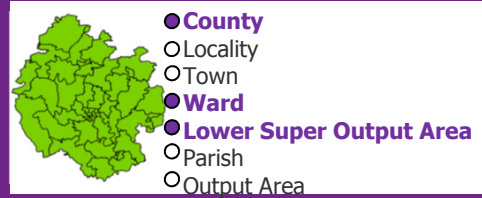


Weobley Ward



Area Quick Statistics

3,493
people

37.6 square miles
97.3 square kilometres

93 people per square mile
36 people per square kilometre

587
people aged under 16

2,004
people aged 16 to 64

903
people aged 65 and over

1,504
households

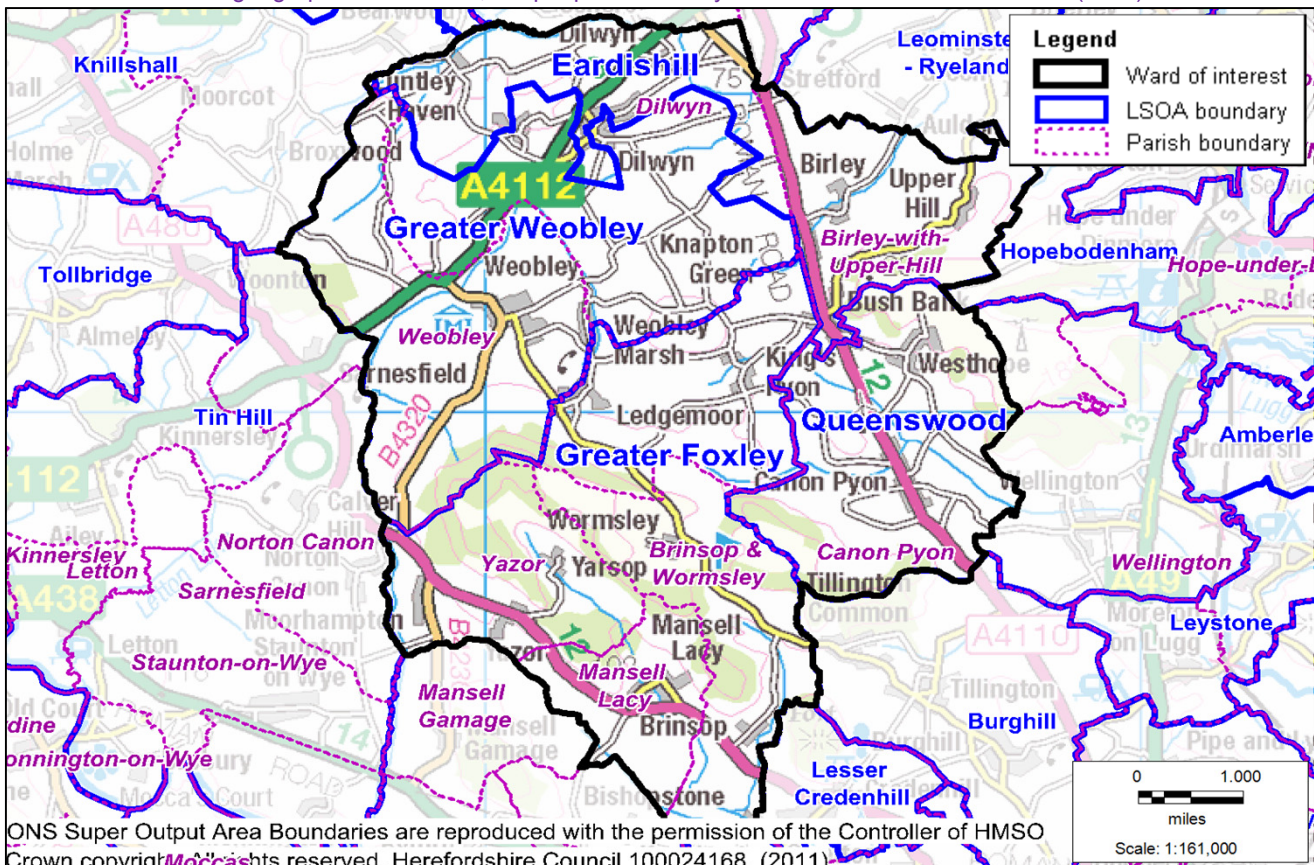
3,490
household residents

average household size =
2.3 people per household

A household is one or more people who share cooking facilities and share a living room or sitting room or dining area

Lower Super Output Areas (LSOAs) and parishes within the ward

LSOAs are statistical geographies of about 1,500 people created by the Office for National Statistics (ONS)



ONS Super Output Area Boundaries are reproduced with the permission of the Controller of HMSO

Crown copyright. All rights reserved. Herefordshire Council 100024168. (2011)

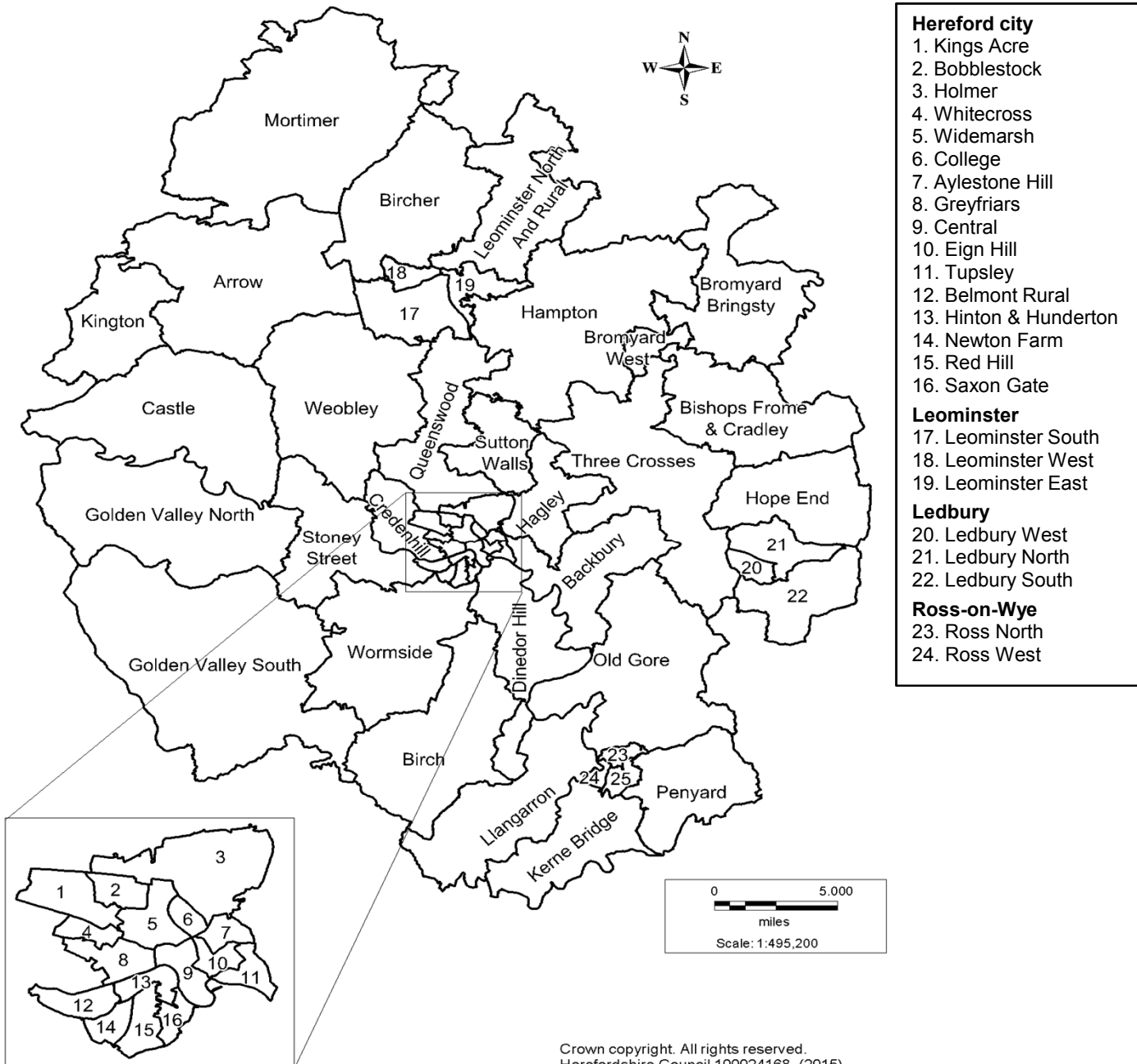
If you would like help to understand this document, or would like it in another format or language, please call the Research Team on 01432 261944 or e-mail researchteam@herefordshire.gov.uk

For a large print copy, please call 01432 261944

LSOAs and parishes within the ward

Lower Super Output Area (LSOA)	Covers parish(es)
Eardishill (part)	Birley with Upper Hill; Dilwyn (part)
Greater Foxley (part)	Brinsop & Wormsley; King's Pyon; Mansell Lacy; Yazor
Greater Weobley	Dilwyn (part); Weobley
Queenswood (part)	Canon Pyon (part)

Wards in Herefordshire



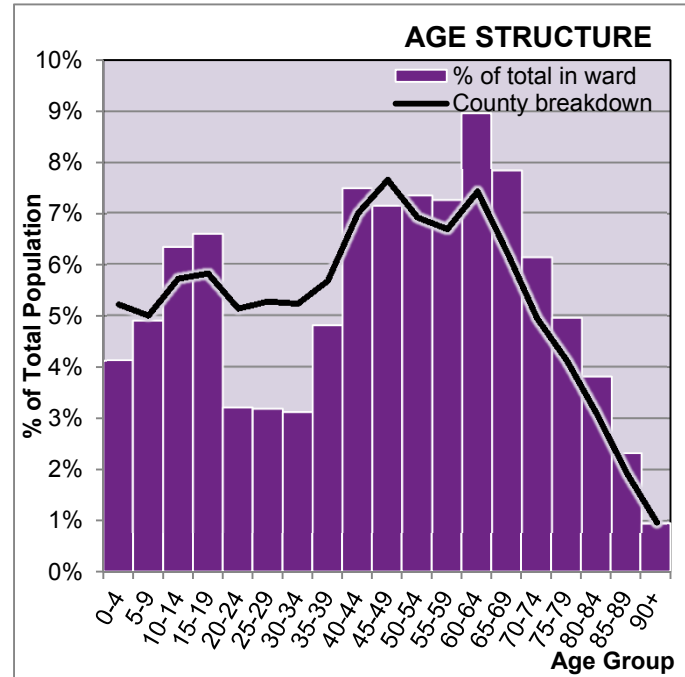
POPULATION



AGE STRUCTURE OF RESIDENT WARD POPULATION

table KS102

Age	No.	% of total in ward	County breakdown
0-4	143	4.1%	5.2%
5-7	93	2.7%	3.0%
8-9	78	2.2%	2.0%
10-14	220	6.3%	5.7%
15	53	1.5%	1.2%
16-17	108	3.1%	2.5%
18-19	69	2.0%	2.1%
20-24	112	3.2%	5.1%
25-29	110	3.1%	5.3%
30-44	535	15.3%	17.9%
45-59	757	21.7%	21.2%
60-64	313	9.0%	7.4%
65-74	485	13.9%	11.2%
75-84	304	8.7%	7.2%
85-89	81	2.3%	1.9%
90+	33	0.9%	1.0%
Total	3,493	100.0%	100.0%

Eardishill (part)
LSOAGreater Foxley
(part) LSOAGreater
Weobley LSOAQueenswood
(part) LSOA

Weobley Ward

Herefordshire

POPULATION IN BROAD AGE-GROUPS

table KS102

	No.	128	105	273	81	587	31,515
Under 16	%	16%	16%	18%	16%	17%	17%
16-64	No.	471	410	795	328	2,004	112,946
	%	59%	62%	53%	63%	57%	62%
65 and over	No.	196	151	442	114	903	39,016
	%	25%	23%	29%	22%	26%	21%
Total	No.	795	666	1,510	522	3,493	183,477
	%	100%	100%	100%	100%	100%	100%

POPULATION DENSITY

table KS102

Area:

square kilometres

square miles

Population density:

persons per

square kilometre

persons per

square mile

square kilometres						97.3	2,180
square miles						37.6	842
persons per square kilometre	40	20	50	50		36	84
persons per square mile	104	52	129	129		93	218

NON-RESIDENTS

table QS105

Number of students whose family home is in the area, who are living away from home during term-time

	70	3,080
--	----	-------



ETHNICITY, IDENTITY, LANGUAGE AND RELIGION

Eardishill (part) LSOA	Greater Foxley (part) LSOA	Greater Weobley LSOA	Queenswood (part) LSOA	Weobley Ward	Herefordshire
---------------------------	-------------------------------	-------------------------	---------------------------	--------------	---------------

ETHNICITY						table KS201
Number of residents						
	795	666	1,510	522	3,493	183,477
% of residents who are:						
White British	95.1%	96.7%	95.4%	97.9%	95.9%	93.7%
Not 'White British' (i.e. BAME)	4.9%	3.3%	4.6%	2.1%	4.1%	6.3%
Number of residents who are:						
Not 'White British' (i.e. BAME)	39	22	70	11	142	11,555
White Irish	5	1	5	1	12	709
White other	23	14	37	7	81	7,538
Non-white	11	7	28	3	49	3,308
Mixed	4	3	16	2	25	1,270
Asian ¹ or Asian ¹ British	6	4	10	1	21	1,439
Black or Black British	0	0	1	0	1	331
Other	1	0	1	0	2	268

¹ Chinese is included in 'Asian' (it was included in a separate 'Chinese or other ethnic group' in the 2001 census)

COUNTRY OF BIRTH & YEAR OF ARRIVAL IN THE UK						table QS203 & QS801
% of residents who were born outside the UK						
	6.0%	4.4%	4.0%	4.0%	4.6%	6.7%
Number of residents who were born:						
Within the EU	18	9	34	8	69	6,972
Poland	4	4	10	3	21	2,958
Other EU 'Accession' countries ²	3	2	4	2	11	2,102
Other EU countries	11	3	20	3	37	1,912
Outside the EU	25	19	22	9	75	4,600
Year of arrival in the UK:						
2004 marks the beginning of the eastward expansion of the European Union, commonly known as 'Accession'.						
Arrived before 2004:						
No.	30	23	41	14	108	5,760
% of residents	3.8%	3.5%	2.7%	2.7%	3.1%	3.1%
Arrived during or after 2004:						
No.	18	6	20	8	52	6,488
% of residents	2.3%	0.9%	1.3%	1.5%	1.5%	3.5%

² Bulgaria, Czech Republic, Hungary, Romania and the Republics of Estonia, Latvia, Lithuania, Slovenia and Slovakia

Eardishill (part) LSOA	Greater Foxley (part) LSOA	Greater Weobley LSOA	Queenswood (part) LSOA	Weobley Ward	Herefordshire
---------------------------	-------------------------------	-------------------------	---------------------------	--------------	---------------

LANGUAGE							tables KS206, QS204 & QS205					
Number of households (one person or a group of people with common housekeeping)							333	280	665	226	1,504	78,319
Households with no people that have English as a main (i.e. first or preferred) language							No. 0	3	3	1	7	1,665
							% 0.0%	1.1%	0.5%	0.4%	0.5%	2.1%
Number of residents aged 3 and over							777	658	1,472	513	3,420	177,688
Residents aged 3 and over whose first or preferred language is:												
Not English	No.	8	9	18	4	39	6,582					
	%	1.0%	1.4%	1.2%	0.8%	1.1%	3.7%					
Polish	No.	4	6	9	3	22	2,893					
	%	0.5%	0.9%	0.6%	0.6%	0.6%	1.6%					
Other EU 'Accession' countries ³	No.	1	1	0	1	3	1,690					
	%	0.1%	0.2%	0.0%	0.2%	0.1%	1.0%					
Other EU	No.	6	6	16	3	31	3,168					
	%	0.8%	0.9%	1.1%	0.6%	0.9%	1.8%					
Outside the EU	No.	1	2	2	0	5	1,724					
	%	0.1%	0.0%	0.1%	0.0%	0.1%	1.0%					
Residents aged 3 and over who cannot speak English well or at all:							No. 0	0	8	2	10	1,981
							% 0.0%	0.0%	0.5%	0.4%	0.3%	1.1%

³ Bulgaria, Czech Republic, Hungary, Romania and the Republics of Estonia, Latvia, Lithuania, Slovenia and Slovakia

RELIGION							table QS210					
Number of residents							795	666	1,510	522	3,493	183,477
% of residents who are:												
No religion	18.5%	17.7%	21.1%	22.0%	20.0%	22.8%						
Christian	70.6%	69.1%	69.5%	71.1%	69.9%	67.8%						
Buddhist	0.6%	0.3%	0.2%	0.2%	0.3%	0.3%						
Hindu	0.1%	0.3%	0.0%	0.0%	0.1%	0.1%						
Jewish	0.0%	0.0%	0.0%	0.2%	0.0%	0.1%						
Muslim	0.1%	0.2%	0.5%	0.0%	0.3%	0.2%						
Sikh	0.0%	0.0%	0.0%	0.0%	0.0%	0.0%						
Other religion	1.4%	0.9%	0.2%	0.6%	0.7%	0.5%						
Mixed Religion	0.0%	0.0%	0.1%	0.0%	0.0%	0.2%						
Pagan	0.4%	0.0%	0.1%	0.2%	0.1%	0.1%						
Spiritualist	0.8%	0.2%	0.1%	0.4%	0.3%	0.1%						
Other	0.3%	0.8%	0.0%	0.0%	0.2%	0.2%						
Religion not stated	8.7%	11.6%	8.5%	5.9%	8.8%	8.2%						



HOMES AND TENURE

Eardishill (part) LSOA	Greater Foxley (part) LSOA	Greater Weobley LSOA	Queenswood (part) LSOA	Weobley Ward	Herefordshire
---------------------------	-------------------------------	-------------------------	---------------------------	--------------	---------------

DWELLINGS & LIVING SPACES						table KS401
Number of dwellings (A building or structure that can be lived in)						
	367	294	705	242	1,608	82,549
Number of household spaces (A dwelling can contain one or more household spaces)						
	367	294	705	242	1,608	82,676
% of household spaces with:						
at least one usual resident	90.7%	95.2%	94.3%	93.4%	93.5%	94.7%
No usual residents	9.3%	4.8%	5.7%	6.2%	6.4%	5.3%
% of household spaces that are:						
Whole house or bungalow						
Detached	68.9%	67.0%	48.9%	71.1%	60.1%	42.4%
Semi-detached	17.2%	20.1%	26.2%	21.1%	22.3%	27.3%
Terraced	8.4%	7.8%	20.9%	6.6%	13.5%	17.1%
Flat, maisonette or apartment						
	1.6%	3.1%	4.0%	0.8%	2.8%	12.1%
Caravan or other mobile or temporary structure						
	3.8%	2.0%	0.0%	0.4%	1.3%	1.1%
Number of household spaces with at least one usual resident (A dwelling can contain one or more household spaces)						
	333	280	665	226	1,504	78,319
% of household spaces that have:						
No bedrooms	1.5%	0.0%	0.0%	0.0%	0.3%	0.2%
1 bedroom	2.4%	4.6%	6.5%	4.0%	4.9%	9.0%
2 bedrooms	19.8%	20.4%	21.8%	17.3%	20.4%	23.9%
3 or 4 bedrooms	44.4%	42.1%	43.6%	44.7%	43.7%	42.2%
5+ bedrooms	22.5%	19.3%	22.1%	23.5%	21.9%	18.3%

HOUSEHOLD TENURE						table KS402
Number of households (one person or a group of people with common housekeeping)						
	333	280	665	226	1,504	78,319
% of households in:						
Owner occupied accommodation						
	82.0%	55.4%	60.5%	71.7%	66.0%	68.7%
Owned outright	53.2%	34.6%	43.6%	42.9%	43.9%	39.4%
Owned with a mortgage or loan	28.5%	20.7%	16.4%	27.4%	21.5%	28.3%
Shared ownership (part owned and part rented)	0.3%	0.0%	0.5%	1.3%	0.5%	1.0%
Rented accommodation						
	16.8%	39.3%	37.6%	24.3%	31.3%	29.4%
Social rented (from a registered social landlord, housing association, housing co-operative, charitable trust or local authority)						
	2.7%	2.1%	20.5%	8.0%	11.2%	13.9%
Private landlord or agency						
	12.6%	35.4%	16.1%	14.2%	18.6%	13.6%
Other (rented from an employer of a household member, relative or friend of a household)						
	1.5%	1.8%	1.1%	2.2%	1.5%	1.9%
Living rent free						
	1.2%	5.4%	2.0%	4.4%	2.8%	1.9%

Eardishill (part) LSOA	Greater Foxley (part) LSOA	Greater Weobley LSOA	Queenswood (part) LSOA	Weobley Ward	Herefordshire
---------------------------	-------------------------------	-------------------------	---------------------------	--------------	---------------

ROOMS, BEDROOMS AND CENTRAL HEATING						tables KS403, QS408 & QS412	
% of households who do not have central heating							
	7.8%	3.9%	4.5%	2.2%	4.8%	3.8%	
Overcrowding:							
% of households who have at least one fewer⁴:							
Rooms than required	3.6%	2.1%	3.8%	0.0%	2.9%	5.3%	
Bedrooms than required	3.0%	1.1%	2.9%	0.4%	2.2%	3.0%	
Under-occupancy:							
% of households who have at least one more⁴:							
Rooms than required	91.6%	91.1%	83.8%	90.3%	87.8%	80.6%	
Bedrooms than required	86.8%	82.5%	80.9%	86.7%	83.4%	75.6%	

⁴ Provides a measure of whether a household's accommodation is overcrowded / under-occupied. The ages of the household members and their relationships to each other are used to derive the number of rooms/bedrooms they require.

RELATIONSHIPS AND LIVING ARRANGEMENTS



Eardishill (part) LSOA	Greater Foxley (part) LSOA	Greater Weobley LSOA	Queenswood (part) LSOA	Weobley Ward	Herefordshire
---------------------------	-------------------------------	-------------------------	---------------------------	--------------	---------------

MARITAL AND CIVIL PARTNERSHIP STATUS table KS103

Number of residents aged 16 and over	667	561	1,237	442	2,907	151,962
% of residents aged 16 and over:						
Single <i>(never married or never registered a same-sex civil partnership)</i>	20.8%	25.1%	24.8%	20.4%	23.3%	28.3%
Married	63.6%	60.4%	51.7%	59.7%	57.3%	51.8%
In a registered same-sex civil partnership	0.0%	0.0%	0.5%	0.9%	0.3%	0.2%
Separated <i>(but still legally married or still legally in a same-sex civil partnership)</i>	1.0%	1.4%	2.8%	2.5%	2.1%	2.2%
Divorced or formerly in a same-sex civil partnership which is now legally dissolved	9.4%	8.9%	8.3%	7.9%	8.6%	9.6%
Widowed or surviving partner from a same-sex civil partnership	5.1%	4.1%	11.8%	8.4%	8.3%	7.9%

HOUSEHOLD COMPOSITION table QS113

Number of households <i>(one person or a group of people with common housekeeping)</i>	333	280	665	226	1,504	78,319
% of households that contain:						
One person only	24.3%	23.6%	31.1%	30.1%	28.1%	28.8%
One family ⁵ only <i>(there are no non-family people in the household)</i>	12.0%	8.2%	20.3%	15.5%	15.5%	14.3%
Only people aged 65 and over	26.7%	23.2%	37.4%	27.0%	30.9%	26.0%
A lone parent	3.6%	5.4%	9.0%	3.1%	6.3%	8.6%
Children ⁶	32.7%	35.7%	33.5%	31.4%	33.4%	35.9%
% of households comprising:						
One person households:						
Aged 65 and over	12.0%	8.2%	20.3%	15.5%	15.5%	14.3%
Other	12.3%	15.4%	10.8%	14.6%	12.6%	14.5%
Married or same-sex civil partnership couple:						
With children	23.1%	24.6%	17.9%	25.2%	21.4%	20.8%
No children	21.0%	18.6%	13.1%	20.4%	17.0%	14.9%
Cohabiting couple:						
With children	2.4%	3.9%	3.8%	1.3%	3.1%	4.4%
No children	4.2%	3.6%	3.3%	4.9%	3.8%	5.1%
Other household types:						
With children	3.6%	1.8%	2.9%	1.8%	2.7%	2.1%
All full-time students	0.0%	0.0%	0.0%	0.0%	0.0%	0.1%
All aged 65 and over	0.6%	0.4%	1.2%	0.4%	0.8%	0.4%
Other	3.0%	3.6%	1.8%	2.7%	2.5%	3.7%

⁵A family is defined as a group of people who are either: any form of couple, with or without child(ren); a lone parent with child(ren); a couple (any form) with grandchild(ren) (if they are not parents or grandparents of the youngest generation)

⁶There is no age limit applied to the definition of a child. For example, a couple living with their son aged 40 would be

Eardishill (part) LSOA	Greater Foxley (part) LSOA	Greater Weobley LSOA	Queenswood (part) LSOA	Weobley Ward	Herefordshire
---------------------------	-------------------------------	-------------------------	---------------------------	--------------	---------------

HOUSEHOLDS WITH DEPENDENT CHILDREN

tables KS106, KS107 & QS113

There is no age limit applied to the definition of a **child**. For example, a couple living with their son aged 40 would be classified as a family consisting of a couple and their child unless the son has a partner or child living in the household. A **dependent child** is a person aged 0 to 15 in a household (whether or not in a family) or aged 16 to 18 in full-time education and living in a family with his or her parent(s). It does not include any children who have a spouse, partner or child living in the household.

Number of households (one person or a group of people with common housekeeping)

	333	280	665	226	1,504	78,319
Number of households with dependent children	89	59	167	51	366	20,713
Number of households that comprise:						
One family⁷ only with dependent children	77	54	148	47	326	19,093
One dependent child	33	17	49	11	110	8,450
Two or more dependent children	44	37	99	36	216	10,643
More than one family⁷ or other household types with dependent children	12	5	19	4	40	1,620
Number of households with dependent children and no adults in employment	7	3	23	2	35	2,111
% of households with one family⁷ only with:						
Dependent children	23.1%	19.3%	22.3%	20.8%	21.7%	24.4%
One dependent child	9.9%	6.1%	7.4%	4.9%	7.3%	10.8%
Two or more dependent children	13.2%	13.2%	14.9%	15.9%	14.4%	13.6%
Non-dependent children (no children or all children are non-dependent)	31.2%	36.8%	24.8%	34.1%	29.9%	29.4%
No children	25.2%	22.1%	16.4%	25.2%	20.7%	20.0%
% of households with more than one family⁷ or other household types with dependent children:	3.6%	1.8%	2.9%	1.8%	2.7%	2.1%
Number of lone parent households with dependent children (where the parent is aged 16-74)	9	7	36	5	57	4,228
In part-time employment	6	4	18	1	29	1,661
In full-time employment	1	1	7	3	12	1,152
Not in employment	2	2	11	1	16	1,415

⁷ A family is defined as a group of people who are either: any form of couple, with or without child(ren); a lone parent with child(ren); a couple (any form) with grandchild(ren) (if they are not parents or grandparents of the youngest generation).

WORKING



Eardishill (part) LSOA	Greater Foxley (part) LSOA	Greater Weobley LSOA	Queenswood (part) LSOA	Weobley Ward	Herefordshire
---------------------------	-------------------------------	-------------------------	---------------------------	--------------	---------------

QUALIFICATIONS

table KS501

Number of residents aged 16 and over	667	561	1,237	442	2,907	151,962
Highest level of qualification						
% of residents aged 16 and over with:						
No qualifications	17.5%	18.7%	25.4%	18.8%	21.3%	22.9%
Level 1 qualifications: 1-4 O Levels/CSE/GCSEs (any grades), NVQ level 1 or equivalent	10.8%	11.4%	12.0%	12.7%	11.7%	12.8%
Level 2 qualifications: 5+ O Levels/CSEs (Grade 1)/GCSEs (Grades A*-C), 1 A Level, NVQ level 2, BTEC First or equivalent	16.6%	14.8%	17.1%	14.3%	16.1%	16.0%
Apprenticeship	5.5%	3.0%	2.6%	3.6%	3.5%	3.6%
Level 3 qualifications: 2+ A Levels, NVQ Level 3, ONC, OND, BTEC National or equivalent	12.4%	13.9%	11.6%	11.8%	12.3%	12.0%
Level 4+ qualifications: Degree, Higher Degree, NVQ Level 4-5, HND, BTEC Higher, professional qualifications or equiv.	32.2%	33.9%	27.6%	35.1%	31.0%	27.5%
Other qualifications: vocational/work-related qualifications, foreign qualifications (not stated/ level unknown).	4.8%	4.3%	3.7%	3.6%	4.1%	5.2%

ECONOMIC ACTIVITY

table KS601

A person is considered to be economically active if they were either in employment at the time of the Census; not in employment, but were seeking work and ready to start work within two weeks; or, not in employment, but waiting to start a job already obtained.

Number of residents aged 16-74 years	577	516	1,008	388	2,489	133,442
% of residents aged 16-74 years:						
Economically active	69.5%	69.0%	60.9%	70.9%	66.1%	71.3%
Employees part-time (= < 30 hrs)	15.9%	14.3%	13.2%	12.4%	13.9%	15.2%
Employees Full-time (= > 31 hrs)	26.7%	29.5%	26.8%	36.3%	28.8%	36.0%
Self - employed	22.4%	21.9%	15.3%	17.5%	18.6%	14.4%
Unemployed	2.3%	1.6%	3.2%	1.5%	2.4%	3.3%
Full-time student	2.3%	1.7%	2.5%	3.1%	2.4%	2.4%
Economically inactive	19.4%	21.7%	11.1%	28.9%	33.6%	28.7%
Retired	20.8%	22.9%	24.0%	18.0%	22.1%	16.6%
Student	3.3%	2.9%	4.4%	4.9%	3.9%	3.6%
Looking after home/family	3.5%	3.1%	4.9%	3.6%	4.0%	3.5%
Permanently sick/disabled	1.0%	1.2%	4.8%	2.3%	2.8%	3.4%
Other	1.9%	1.0%	1.1%	0.5%	1.2%	1.6%

Eardishill (part) LSOA	Greater Foxley (part) LSOA	Greater Weobley LSOA	Queenswood (part) LSOA	Weobley Ward	Herefordshire
---------------------------	-------------------------------	-------------------------	---------------------------	--------------	---------------

INDUSTRY						table KS605
Number of residents aged 16-74 in employment						
	385	347	579	263	1,574	90,237
% of residents aged 16-74 in employment working in:						
Agriculture, forestry and fishing	11.7%	9.8%	10.4%	10.6%	10.6%	5.4%
Production (<i>Mining & quarrying; Manufacturing; Electricity, gas, steam and air conditioning supply; Water supply; sewerage, waste management and remediation activities</i>)	9.4%	8.6%	14.2%	15.6%	12.0%	13.7%
Construction	7.8%	9.5%	8.8%	8.0%	8.6%	8.7%
Distribution; transport; accommodation and food (<i>Wholesale & retail trade; repair of motor vehicles & motor cycles; Transport & storage; Accommodation & food service activities</i>)	28.1%	28.5%	25.7%	24.3%	26.7%	28.5%
Information and communication	2.1%	3.7%	1.4%	3.0%	2.4%	2.1%
Financial and insurance activities	0.8%	0.6%	0.7%	1.5%	0.8%	1.7%
Real estate activities	2.9%	3.7%	1.2%	2.7%	2.4%	1.6%
Business service activities (<i>Professional, scientific & technical activities; Administrative & support service activities</i>)	10.6%	8.1%	7.4%	11.0%	9.0%	9.5%
Public administration; education; health (<i>Public administration & defence; compulsory social security; Education; Human health and social work activities</i>)	25.7%	26.5%	29.4%	24.7%	27.1%	27.5%
Other services and household activities (<i>arts, entertainment and recreation industry; other service activities; the activities of households as employers, undifferentiated goods and services producing activities of households for own use industry; and the activities of extraterritorial organisations and bodies industry</i>)	7.0%	6.6%	3.6%	3.0%	5.0%	4.6%

OCCUPATION						table KS608
% of residents aged 16-74 in employment working in:						
Managers, directors and senior officials	17.4%	12.4%	11.4%	15.2%	13.7%	11.6%
Professional occupations	16.6%	16.7%	14.9%	19.0%	16.4%	14.5%
Associate professional and technical occupations	10.4%	9.2%	7.4%	8.7%	8.8%	10.3%
Administrative and secretarial occupations	8.8%	10.4%	7.9%	13.3%	9.6%	9.7%
Skilled trades occupations	19.7%	23.6%	20.2%	19.8%	20.8%	16.2%
Caring, leisure and other service occupations	10.4%	10.1%	9.0%	6.1%	9.1%	9.9%
Sales and customer service occupations	4.9%	6.1%	4.5%	4.6%	5.0%	7.4%
Process, plant and machine operatives	4.2%	4.3%	7.6%	4.6%	5.5%	8.5%
Elementary occupations	7.5%	7.2%	17.1%	8.4%	11.1%	12.0%

Eardishill (part) LSOA	Greater Foxley (part) LSOA	Greater Weobley LSOA	Queenswood (part) LSOA	Weobley Ward	Herefordshire
---------------------------	-------------------------------	-------------------------	---------------------------	--------------	---------------

NATIONAL STATISTICS SOCIO-ECONOMIC CLASSIFICATION (NS-SEC)

table KS611

The NS-SEC provides an indication of socio-economic position based on occupation. Whereas 'Occupation' (see table on previous page) only includes people in employment, the NS-SEC categories include unemployed people (except the long-term unemployed and those who have never worked); retired people; those looking after a home; those on government employment or training schemes; and people who are sick or disabled. The normal procedure is to classify these people according to their last main job.

Number of residents aged 16-74 years and over

577	516	1,008	388	2,489	133,442
-----	-----	-------	-----	-------	---------

% of residents aged 16-74 in:

Higher managerial, administrative and professional occupations	12.3%	11.8%	9.4%	12.9%	11.1%	9.3%
<i>Large employers and higher managerial and administrative occupations</i>	4.0%	2.5%	3.2%	3.6%	3.3%	2.5%
<i>Higher professional occupations</i>	8.3%	9.3%	6.3%	9.3%	7.8%	6.8%
Lower managerial, administrative and professional occupations	24.8%	25.6%	20.1%	25.8%	23.2%	21.3%
Intermediate occupations	10.1%	10.7%	9.1%	11.9%	10.1%	11.2%
Small employers and own account workers	22.7%	21.1%	17.7%	16.0%	19.3%	14.5%
Lower supervisory and technical occupations	3.5%	5.4%	6.3%	4.4%	5.1%	7.1%
Semi-routine occupations	12.8%	12.6%	15.9%	11.1%	13.7%	16.2%
Routine occupations	5.5%	6.0%	11.4%	7.7%	8.4%	10.9%
Never worked and long-term unemployed	2.8%	2.3%	3.3%	2.3%	2.8%	3.6%
<i>Never worked</i>	1.2%	1.4%	0.0%	1.5%	1.9%	2.4%
<i>Long-term unemployed</i>	1.6%	1.0%	0.6%	1.0%	1.0%	1.2%
Full-time students	5.5%	4.5%	6.8%	7.7%	6.2%	5.8%



TRANSPORT

Eardishill (part) LSOA	Greater Foxley (part) LSOA	Greater Weobley LSOA	Queenswood (part) LSOA	Weobley Ward	Herefordshire
---------------------------	-------------------------------	-------------------------	---------------------------	--------------	---------------

TRAVEL TO WORK

table QS701

If a respondent ticked 'work mainly at or from home', but also ticked a mode of travel, they were counted in the 'Travel to work' group (in the 2001 Census they would have been counted as working mainly at or from home).

Number of residents aged 16-74 years and over

	577	516	1,008	388	2,489	133,442
--	-----	-----	-------	-----	-------	---------

% of residents aged 16-74 who:

Are not in employment	33.3%	32.8%	42.6%	32.0%	36.7%	32.4%
Work mainly at or from home	9.4%	10.3%	7.1%	10.3%	8.8%	6.3%
Travel to work	57.4%	57.0%	50.3%	57.7%	54.5%	61.3%

Number of residents aged 16 to 74 who travel to work

	331	294	507	224	1,356	81,801
--	-----	-----	-----	-----	-------	--------

% of residents aged 16 to 74 who travel to work and get there by:

Driving a car or van	83.7%	82.0%	72.4%	79.5%	78.4%	69.2%
On foot	8.2%	6.5%	14.8%	7.1%	10.1%	16.1%
Passenger in a car or van	4.8%	3.1%	6.7%	3.1%	4.9%	5.8%
Bicycle	0.9%	1.4%	2.4%	2.2%	1.8%	4.0%
Bus, minibus or coach	0.0%	2.4%	2.6%	2.7%	1.9%	1.9%
Train	0.6%	1.0%	0.4%	2.2%	0.9%	0.8%
Motorcycle, scooter or moped	0.0%	1.4%	0.2%	1.8%	0.7%	0.8%
Taxi	0.3%	0.3%	0.2%	0.0%	0.2%	0.4%
Underground, metro, light rail, tram	0.0%	0.3%	0.2%	0.4%	0.2%	0.1%
Other method of travel to work	1.5%	1.7%	0.2%	0.9%	1.0%	0.9%

CAR AND VAN AVAILABILITY

table KS404

Number of households (one person or a group of people with common housekeeping)

	333	280	665	226	1,504	78,319
--	-----	-----	-----	-----	-------	--------

% of households with access to the following number of cars or vans:

None	4.5%	3.6%	14.7%	8.4%	9.4%	16.4%
One	37.2%	37.5%	49.0%	36.3%	42.4%	41.6%
Two	38.4%	37.5%	28.1%	38.1%	33.6%	30.4%
Three	14.1%	13.9%	5.6%	12.4%	10.0%	8.2%
Four or more	5.7%	7.5%	2.6%	5.3%	4.6%	3.5%

Number of cars or vans in the area

	607	532	891	395	2,425	111,829
--	-----	-----	-----	-----	-------	---------

HEALTH AND CARE



Eardishill (part) LSOA	Greater Foxley (part) LSOA	Greater Weobley LSOA	Queenswood (part) LSOA	Weobley Ward	Herefordshire
---------------------------	-------------------------------	-------------------------	---------------------------	--------------	---------------

HEALTH

table KS301

A limiting long term illness is a self-defined long-term illness, health problem or disability which limits daily activities or work.

Number of residents

	795	666	1,510	522	3,493	183,477
% of residents with limiting long term illness:						
all ages	17.1%	14.7%	22.8%	16.1%	19.0%	18.7%
<i>Daily activities limited:</i>						
A little	10.6%	8.6%	11.5%	9.8%	10.4%	10.4%
A lot	6.5%	6.2%	11.3%	6.3%	8.5%	8.4%
aged 16 to 64	5.5%	7.4%	6.6%	6.9%	6.6%	7.8%
<i>Daily activities limited:</i>						
A little	3.9%	4.5%	2.8%	4.6%	3.7%	4.6%
A lot	1.6%	2.9%	3.8%	2.3%	2.9%	3.2%
<i>Health is a self-assessment of a person's general state of health.</i>						
% of residents whose health was:						
Very good	45.3%	49.8%	43.4%	49.6%	46.0%	45.7%
Good	36.0%	36.2%	33.6%	35.8%	35.0%	35.2%
Fair	15.1%	11.1%	16.2%	10.5%	14.1%	13.9%
Bad	3.3%	2.0%	5.6%	2.9%	4.0%	4.1%
Very bad	0.4%	0.9%	1.1%	1.1%	0.9%	1.2%

PROVISION OF UNPAID CARE

table KS301

A person is a provider of unpaid care if they look after or give help or support to family members, friends, neighbours or others because of long-term physical or mental ill health or disability, or problems related to old age.

Number of residents providing unpaid care:

	95	91	239	61	486	20,676
% of residents who provide unpaid care for:						
1 to 19 hours	71.6%	75.8%	64.4%	80.3%	70.0%	67.7%
20 to 49 hours	6.3%	11.0%	10.0%	4.9%	8.8%	11.4%
50 or more hours	22.1%	13.2%	25.5%	14.8%	21.2%	20.9%